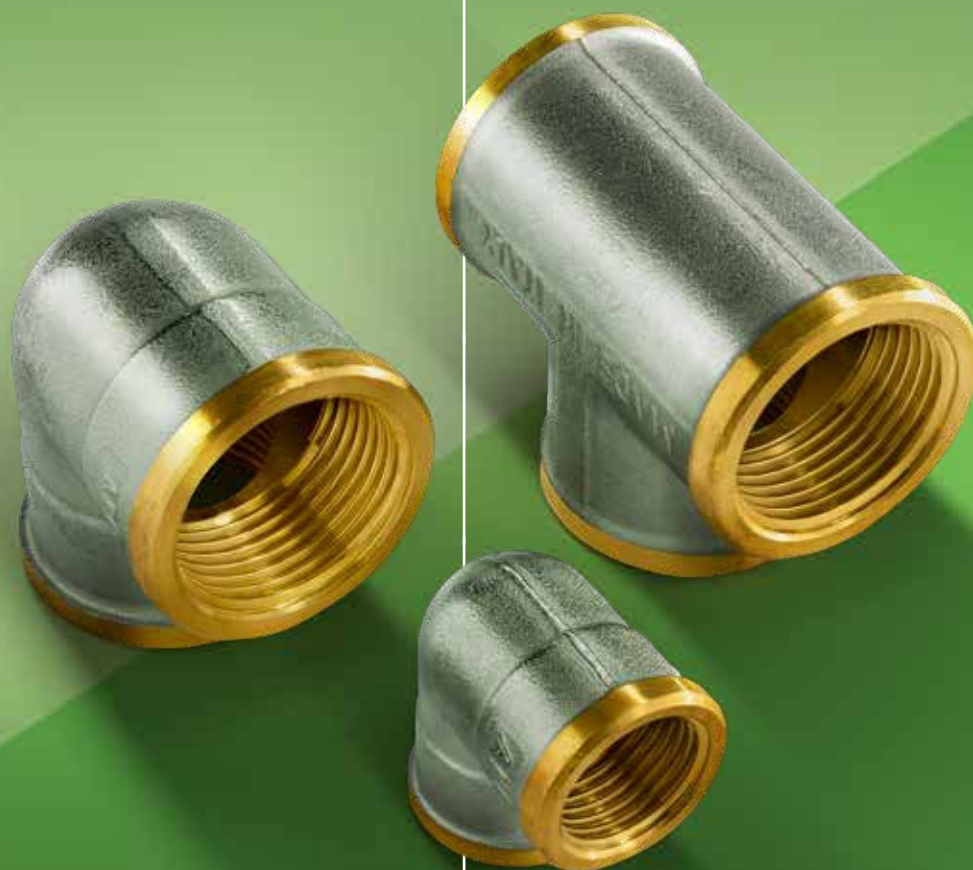


FITTINGS



**RACCORDERIA IDRAULICA,
VALVOLE E DETENTORI**

Sede
BRESCIA / ITALY

1964

**NASCE APE
RACCORDERIE**

con il nome
"Minuterie Metalliche
di Pe Angelo"

Presente
commercialmente
in oltre

50
PAESI



Oggi con i suoi

52 mila mq

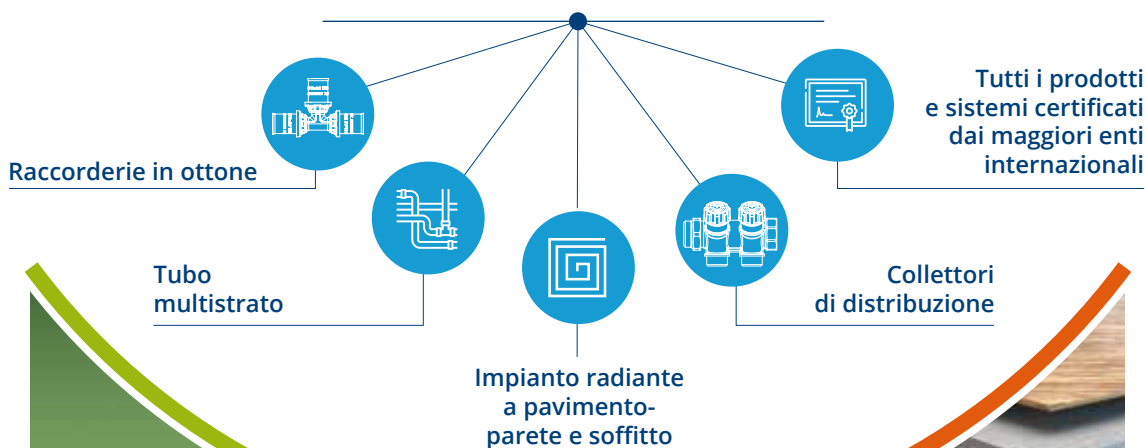
è tra le poche aziende
produttrici dell'intero sistema
tubo-raccordo.

APE[®]
RACCORDERIE

presente nel mercato
nazionale e internazionale da

60 anni

**PRODUTTORI DELL'INTERO
SISTEMA IDROTERMOSANITARIO**



FITTINGS

PIPES

GAS

THERM

FITTINGS



SERIE RACCORDERIA IDRAULICA, VALVOLE E DETENTORI

RACCORDERIA IDRAULICA, VALVOLE E DETENTORI

| | | |
|--|--|----|
|  | PROLUNGA IN OTTONE ART. 197 | 4 |
|  | RIDUZIONE MM ART. 580 | 4 |
|  | RIDUZIONE MF ART. 581 | 5 |
|  | NIPPLE MM ART. 582 | 6 |
|  | TAPPO MASCHIO ART. 583 | 6 |
|  | TAPPO FEMMINA ART. 590 | 7 |
|  | RIDUZIONE FF ART. 591 | 7 |
|  | RIDUZIONE FM ART. 592 | 8 |
|  | MANICOTTO FF ART. 270 | 8 |
|  | MANICOTTO RIDOTTO FF ART. 240 | 9 |
|  | TEE FFF ART. 130 | 9 |
|  | GOMITO FF ART. 90 | 10 |
|  | GOMITO MF ART. 92 | 10 |
|  | GOMITO MM ART. 93 | 11 |
|  | GHIERA FILETTATA ART. 99 | 11 |
|  | NIPPLE CON O-RING ART. 582 CO | 12 |
|  | FILTRO A Y ART. 3FIL | 12 |
|  | TRE PEZZI DIRITTO MF ART. 341 | 13 |
|  | TRE PEZZI DIRITTO CON O-RING MF ART. 341 CO | 13 |
|  | TRE PEZZI CURVO MF ART. 98 | 14 |
|  | TRE PEZZI CURVO CON O-RING MF ART. 98 CO | 14 |
|  | VALVOLA NICHELATA SFIATO ARIA ART. 860 | 15 |
|  | VALVOLA A SQUADRA PER TUBO MULTISTRATO/RAME ART. 880 | 16 |
|  | DETENTORE A SQUADRA PER TUBO MULTISTRATO/RAME ART. 882 | 16 |
|  | VALVOLA A SQUADRA TERMOSTATIZZABILE PER TUBO MULTISTRATO/RAME ART. 880 T | 17 |
|  | TESTA TERMOSTATICA PER VALVOLE RADIATORE CON FILETTO M30X1,5 ART. TESVAL | 17 |

SERIE RI

Raccordi per idraulica

PROLUNGA IN OTTONE ART. 197



RIDUZIONE MM ART. 580

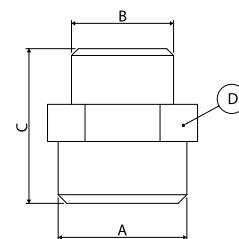
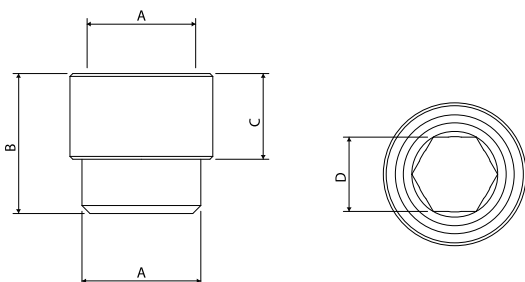


| Codice | Misura | Busta (nr) | Box (nr) |
|-----------|-----------|------------|----------|
| 31971210N | 1/2" x 10 | 10 | 200 |
| 31971215N | 1/2" x 15 | 10 | 200 |
| 31971220N | 1/2" x 20 | 10 | 150 |
| 31971225N | 1/2" x 25 | 10 | 130 |
| 31971230N | 1/2" x 30 | 10 | 120 |

| Codice | Misura | Busta (nr) | Box (nr) |
|-----------|-------------|------------|----------|
| 35803814N | 3/8" x 1/4" | 10 | 300 |
| 35801238N | 1/2" x 3/8" | 10 | 250 |
| 35803412N | 3/4" x 1/2" | 10 | 150 |
| 35800134N | 1" x 3/4" | 10 | 90 |

| Codice | A (mm) | B (mm) | C (mm) | D (mm) |
|-----------|---------------|--------|--------|--------|
| 31971210N | G1/2" ISO 228 | 19,50 | 10 | 13 |
| 31971215N | G1/2" ISO 228 | 24,50 | 15 | 13 |
| 31971220N | G1/2" ISO 228 | 29,50 | 20 | 13 |
| 31971225N | G1/2" ISO 228 | 34,50 | 25 | 13 |
| 31971230N | G1/2" ISO 228 | 39,50 | 30 | 13 |

| Codice | A (mm) | B (mm) | C (mm) | D (mm) |
|-----------|---------------|---------------|--------|--------|
| 35803814N | G3/8" ISO 228 | G1/4" ISO 228 | 23 | CH 17 |
| 35801238N | G1/2" ISO 228 | G3/8" ISO 228 | 25 | CH 21 |
| 35803412N | G3/4" ISO 228 | G1/2" ISO 228 | 27 | CH 27 |
| 35800134N | G1" ISO 228 | G3/4" ISO 228 | 31 | CH 33 |



SERIE RI

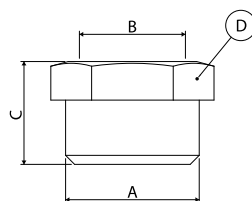
Raccordi per idraulica

RIDUZIONE MF ART. 581



| Codice | Misura | Busta (nr) | Box (nr) |
|-----------|--------------|------------|----------|
| 35811238N | 1/2" x 3/8" | 10 | 250 |
| 35813438N | 3/4" x 3/8" | 10 | 200 |
| 35813412N | 3/4" x 1/2" | 10 | 200 |
| 35810112N | 1" x 1/2" | 10 | 100 |
| 35810134N | 1" x 3/4" | 10 | 100 |
| 35810114N | 1"1/4 x 1" | 10 | 70 |
| 35811438N | 1"1/4 x 3/8" | 10 | 60 |

| Codice | A (mm) | B (mm) | C (mm) | D (mm) |
|-----------|----------------|---------------|--------|--------|
| 35811238N | G1/2" ISO 228 | G3/8" ISO 228 | 16 | CH 22 |
| 35813438N | G3/4" ISO 228 | G3/8" ISO 228 | 17 | CH 27 |
| 35813412N | G3/4" ISO 228 | G1/2" ISO 228 | 17 | CH 27 |
| 35810112N | G1" ISO 228 | G1/2" ISO 228 | 20 | CH 34 |
| 35810134N | G1" ISO 228 | G3/4" ISO 228 | 20 | CH 34 |
| 35810114N | G1"1/4 ISO 228 | G1" ISO 228 | 22 | CH 42 |
| 35811438N | G1"1/4 ISO 228 | G3/8" ISO 228 | 23 | CH 40 |



SERIE RI

Raccordi per idraulica

NIPPLE MM ART. 582



TAPPO MASCHIO ART. 583

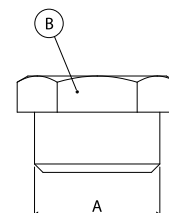
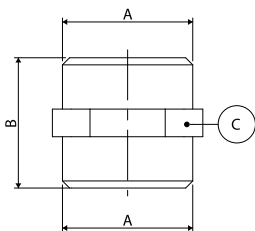


| Codice | Misura | Busta (nr) | Box (nr) |
|-----------|---------------|------------|----------|
| 35823838N | 3/8" x 3/8" | 10 | 250 |
| 35821212N | 1/2" x 1/2" | 10 | 200 |
| 35823434N | 3/4" x 3/4" | 10 | 150 |
| 35820101N | 1" x 1" | 10 | 80 |
| 35820114N | 1"1/4 x 1"1/4 | 5 | 35 |
| 35820112N | 1"1/2 x 1"1/2 | 5 | 25 |

| Codice | A (mm) | B (mm) | C (mm) |
|-----------|----------------|--------|--------|
| 35823838N | G3/8" ISO 228 | 34 | CH 17 |
| 35821212N | G1/2" ISO 228 | 26 | CH 21 |
| 35823434N | G3/4" ISO 228 | 28 | CH 27 |
| 35820101N | G1" ISO 228 | 33 | CH 33 |
| 35820114N | G1"1/4 ISO 228 | 37 | CH 42 |
| 35820112N | G1"1/2 ISO 228 | 43 | CH 48 |

| Codice | Misura | Busta (nr) | Box (nr) |
|-----------|--------|------------|----------|
| 35830038N | 3/8" | 10 | 250 |
| 35830012N | 1/2" | 10 | 250 |
| 35830034N | 3/4" | 10 | 150 |
| 35830001N | 1" | 10 | 120 |

| Codice | A (mm) | B (mm) |
|-----------|--------|--------|
| 35830014N | 1/4" | CH 17 |
| 35830038N | 3/8" | CH 19 |
| 35830012N | 1/2" | CH 23 |
| 35830034N | 3/4" | CH 30 |
| 35830001N | 1" | CH 34 |



SERIE RI

Raccordi per idraulica

TAPPO FEMMINA ART. 590



RIDUZIONE FF ART. 591

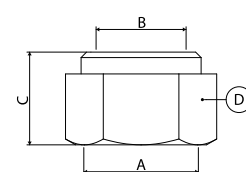
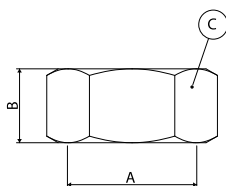


| Codice | Misura | Busta (nr) | Box (nr) |
|-----------|--------|------------|----------|
| 35900038N | 3/8" | 10 | 400 |
| 35900012N | 1/2" | 10 | 300 |
| 35900034N | 3/4" | 10 | 200 |
| 35900001N | 1" | 10 | 100 |

| Codice | Misura | Busta (nr) | Box (nr) |
|-----------|-------------|------------|----------|
| 35911238N | 1/2" x 3/8" | 10 | 200 |
| 35913438N | 3/4" x 3/8" | 10 | 150 |
| 35913412N | 3/4" x 1/2" | 10 | 150 |

| Codice | A (mm) | B (mm) | C (mm) |
|-----------|----------------|--------|--------|
| 35900038N | G 3/8" ISO 228 | 10,30 | CH 20 |
| 35900012N | G 1/2" ISO 228 | 12 | CH 24 |
| 35900034N | G 3/4" ISO 228 | 12,50 | CH 30 |
| 35900001N | G 1" ISO 228 | 14,70 | CH 37 |

| Codice | A (mm) | B (mm) | C (mm) | D (mm) |
|-----------|---------------|---------------|--------|--------|
| 35911238N | G1/2" ISO 228 | G3/8" ISO 228 | 17 | CH 24 |
| 35913438N | G3/4" ISO 228 | G3/8" ISO 228 | 21 | CH 30 |
| 35913412N | G3/4" ISO 228 | G1/2" ISO 228 | 21 | CH 30 |



SERIE RI

Raccordi per idraulica

RIDUZIONE FM ART. 592



MANICOTTO FF ART. 270

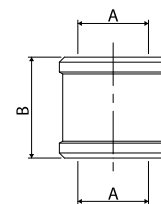
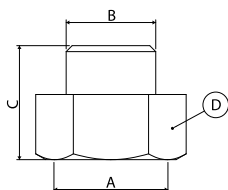


| Codice | Misura | Busta (nr) | Box (nr) |
|-----------|-------------|------------|----------|
| 35923838N | 3/8" x 3/8" | 10 | 250 |
| 35921238N | 1/2" x 3/8" | 10 | 200 |
| 35923412N | 3/4" x 1/2" | 10 | 150 |
| 35920134N | 1" x 3/4" | 10 | 100 |

| Codice | A (mm) | B (mm) | C (mm) | D (mm) |
|-----------|---------------|---------------|--------|--------|
| 35923838N | G3/8" ISO 228 | G3/8" ISO 228 | 21 | CH 24 |
| 35921238N | G1/2" ISO 228 | G3/8" ISO 228 | 21 | CH 24 |
| 35923412N | G3/4" ISO 228 | G1/2" ISO 228 | 24 | CH 30 |
| 35920134N | G1" ISO 228 | G3/4" ISO 228 | 25 | CH 38 |

| Codice | Misura | Busta (nr) | Box (nr) |
|-----------|--------|------------|----------|
| A2700012N | 1/2" | 10 | 150 |
| A2700034N | 3/4" | 10 | 100 |
| A2700001N | 1" | 10 | 50 |

| Codice | A (mm) | B (mm) |
|-----------|---------------|--------|
| A2700038N | G3/8" ISO 228 | 22 |
| A2700012N | G1/2" ISO 228 | 24 |
| A2700034N | G3/4" ISO 228 | 30 |
| A2700001N | G1" ISO 228 | 37,50 |



SERIE RI

Raccordi per idraulica

MANICOTTO RIDOTTO FF ART. 240



TEE FFF ART. 130

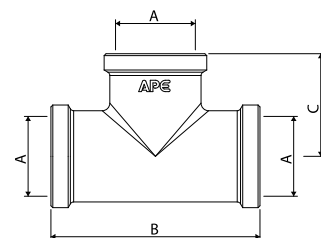
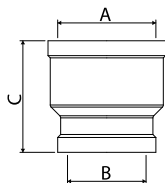


| Codice | Misura | Busta (nr) | Box (nr) |
|-----------|-----------|------------|----------|
| A2400134N | 1" x 3/4" | 10 | 60 |

| Codice | A (mm) | B (mm) | C (mm) |
|-----------|-------------|---------------|--------|
| A2400134N | G1" ISO 228 | G3/4" ISO 228 | 37,50 |

| Codice | Misura | Busta (nr) | Box (nr) |
|-----------|--------|------------|----------|
| A1300012N | 1/2" | 10 | 60 |
| A1300034N | 3/4" | 10 | 40 |
| A1300001N | 1" | 5 | 20 |

| Codice | A (mm) | B (mm) | C (mm) |
|-----------|---------------|--------|--------|
| A1300038N | G3/8" ISO 228 | 50,50 | 24 |
| A1300012N | G1/2" ISO 228 | 55 | 27 |
| A1300034N | G3/4" ISO 228 | 63 | 32 |
| A1300001N | G1" ISO 228 | 67,50 | 35 |



SERIE RI

Raccordi per idraulica

GOMITO FF ART. 90



GOMITO MF ART. 92

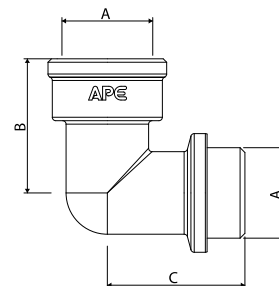
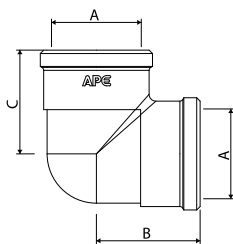


| Codice | Misura | Busta (nr) | Box (nr) |
|-----------|-------------|------------|----------|
| A0900012N | 1/2" x 1/2" | 10 | 100 |
| A0900034N | 3/4" x 3/4" | 10 | 60 |
| A0900001N | 1" x 1" | 5 | 40 |

| Codice | A (mm) | B (mm) | C (mm) |
|-----------|---------------|--------|--------|
| A0900012N | G1/2" ISO 228 | 25,50 | 25,50 |
| A0900034N | G3/4" ISO 228 | 30,50 | 30,50 |
| A0900001N | G1" ISO 228 | 35,50 | 35,50 |

| Codice | Misura | Busta (nr) | Box (nr) |
|-----------|-------------|------------|----------|
| A0920012N | 1/2" x 1/2" | 10 | 80 |
| A0920034N | 3/4" x 3/4" | 10 | 40 |
| A0920001N | 1" x 1" | 5 | 25 |

| Codice | A (mm) | B (mm) | C (mm) |
|-----------|---------------|--------|--------|
| A0920012N | G1/2" ISO 228 | 31,50 | 34 |
| A0920034N | G3/4" ISO 228 | 39 | 40 |
| A0920001N | G1" ISO 228 | 47 | 46 |



SERIE RI

Raccordi per idraulica

GOMITO MM ART. 93



GHIERA FILETTATA ART. 99

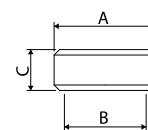
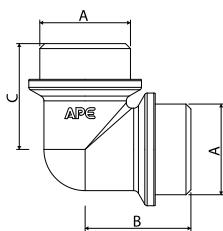


| Codice | Misura | Busta (nr) | Box (nr) |
|-----------|-------------|------------|----------|
| A0930012N | 1/2" x 1/2" | 10 | 80 |
| A0930034N | 3/4" x 3/4" | 10 | 50 |
| A0930001N | 1" x 1" | 5 | 50 |

| Codice | A (mm) | B (mm) | C (mm) |
|-----------|---------------|--------|--------|
| A0930012N | G1/2" ISO 228 | 34 | 34 |
| A0930034N | G3/4" ISO 228 | 40 | 40 |
| A0930001N | G1" ISO 228 | 38,50 | 38,50 |

| Codice | Misura | Busta (nr) | Box (nr) |
|-----------|-------------|------------|----------|
| A0991238N | 1/2" x 3/8" | 10 | 400 |
| A0993412N | 3/4" x 1/2" | 10 | 300 |

| Codice | A (mm) | B (mm) | C (mm) |
|-----------|---------------|---------------|--------|
| A0991238N | G1/2" ISO 228 | G3/8" ISO 228 | 9,50 |
| A0993412N | G3/4" ISO 228 | G1/2" ISO 228 | 10,50 |



SERIE RI

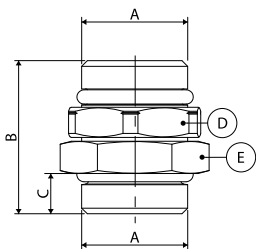
Raccordi per idraulica

NIPPLE CON O-RING ART. 582 CO



| Codice | Misura | Busta (nr) | Box (nr) |
|-----------|---------|------------|----------|
| 3582C001N | 1" x 1" | 10 | 100 |

| Codice | A (mm) | B (mm) | C (mm) | D (mm) | E (mm) |
|-----------|-------------|--------|--------|--------|--------|
| 3582C001N | G1" ISO 228 | 42 | 12 | 40 | 40 |

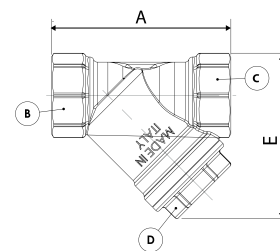


FILTRO A Y ART. 3FIL



| Codice | Misura | Busta (nr) | Box (nr) |
|--------|--------|------------|----------|
| 3FIL12 | 1/2" | 1 | 20 |
| 3FIL34 | 3/4" | 1 | 10 |
| 3FIL01 | 1" | 1 | 6 |

| Codice | A (mm) | B (mm) | C (mm) | D (mm) | E (mm) |
|--------|--------|--------|--------|----------|--------|
| 3FIL12 | 58 | CH 25 | CH 25 | CH 20 | 52,6 |
| 3FIL34 | 70 | CH 31 | CH 31 | CH 27,50 | 64,5 |
| 3FIL01 | 78 | CH 38 | CH 38 | CH 27,50 | 69,3 |



SERIE RT

Raccordi per termosifoni

TRE PEZZI DIRITTO MF ART. 341



TRE PEZZI DIRITTO CON O-RING MF ART. 341 CO

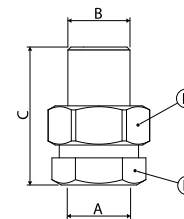
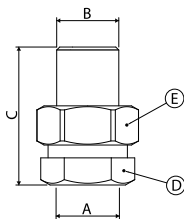


| Codice | Misura | Busta (nr) | Box (nr) |
|----------|-------------|------------|----------|
| 30410012 | 1/2" x 1/2" | 10 | 100 |
| 30410034 | 3/4" x 3/4" | 10 | 60 |
| 30410001 | 1" x 1" | 5 | 25 |

| Codice | Misura | Busta (nr) | Box (nr) |
|----------|-------------|------------|----------|
| 3041CO12 | 1/2" X 1/2" | 10 | 100 |
| 3041CO34 | 3/4" X 3/4" | 10 | 60 |
| 3041CO01 | 1" x 1" | 5 | 30 |

| Codice | A (mm) | B (mm) | C (mm) | D (mm) | E (mm) |
|----------|---------------|---------------|--------|--------|--------|
| 30410012 | G1/2" ISO 228 | G1/2" ISO 228 | 45,85 | 27 | 30 |
| 30410034 | G3/4" ISO 228 | G3/4" ISO 228 | 50,95 | 33 | 37 |
| 30410001 | G1" ISO 228 | G1" ISO 228 | 60,30 | 42 | 46 |

| Codice | A (mm) | B (mm) | C (mm) | D (mm) | E (mm) |
|----------|---------------|---------------|--------|--------|--------|
| 3041CO12 | G1/2" ISO 228 | G1/2" ISO 228 | 46,10 | 27 | 30 |
| 3041CO34 | G3/4" ISO 228 | G3/4" ISO 228 | 51,55 | 33 | 37 |
| 3041CO01 | G1" ISO 228 | G1" ISO 228 | 60,05 | 42 | 46 |



SERIE RT

Raccordi per termosifoni

TRE PEZZI CURVO MF ART. 98



TRE PEZZI CURVO CON O-RING MF ART. 98 CO

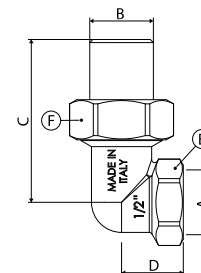
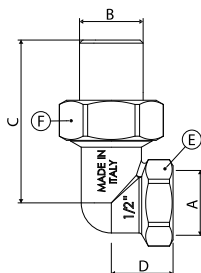


| Codice | Misura | Busta (nr) | Box (nr) |
|----------|-------------|------------|----------|
| 30980012 | 1/2" x 1/2" | 10 | 70 |
| 30980034 | 3/4" x 3/4" | 10 | 40 |
| 30980001 | 1" x 1" | 5 | 20 |

| Codice | Misura | Busta (nr) | Box (nr) |
|----------|-------------|------------|----------|
| 3098CO12 | 1/2" X 1/2" | 10 | 70 |
| 3098CO34 | 3/4" X 3/4" | 10 | 40 |
| 3098CO01 | 1" x 1" | 5 | 20 |

| Codice | A (mm) | B (mm) | C (mm) | D (mm) | E (mm) | F (mm) |
|----------|---------------|---------------|--------|--------|--------|--------|
| 30980012 | G1/2" ISO 228 | G1/2" ISO 228 | 50,95 | 22 | CH 25 | CH 25 |
| 30980034 | G3/4" ISO 228 | G3/4" ISO 228 | 61,15 | 26,50 | CH 31 | CH 31 |
| 30980001 | G1" ISO 228 | G1" ISO 228 | 70,09 | 35 | CH 38 | CH 38 |

| Codice | A (mm) | B (mm) | C (mm) | D (mm) | E (mm) | F (mm) |
|----------|---------------|---------------|--------|--------|--------|--------|
| 3098CO12 | G1/2" ISO 228 | G1/2" ISO 228 | 51,20 | 22 | CH 25 | CH 25 |
| 3098CO34 | G3/4" ISO 228 | G3/4" ISO 228 | 59,16 | 26,50 | CH 31 | CH 31 |
| 3098CO01 | G1" ISO 228 | G1" ISO 228 | 67,50 | 35 | CH 38 | CH 38 |



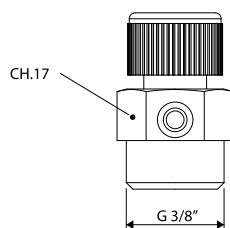
SERIE RT

Raccordi per termosifoni

VALVOLA NICHELATA SFIATO ARIA ART. 860

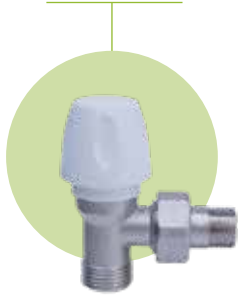


| Codice | Misura | Busta (nr) | Box (nr) |
|----------|------------------------------|------------|----------|
| 88600038 | Valvola sfiato da 3/8 CH. 17 | 100 | 400 |



VALVOLE E DETENTORI

VALVOLA A SQUADRA PER TUBO MULTISTRATO/RAME ART. 880



DETTENTORE A SQUADRA PER TUBO MULTISTRATO/RAME ART. 882

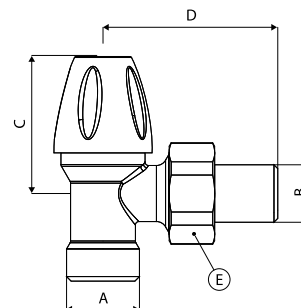
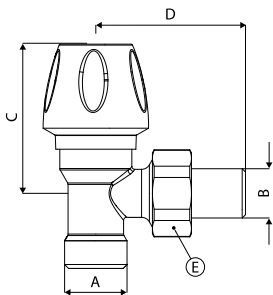


| Codice | Misura | Busta (nr) | Box (nr) |
|----------|-------------|------------|----------|
| 88010038 | 1/2" x 3/8" | 10 | 20 |
| 88010012 | 1/2" x 1/2" | 10 | 20 |

| Codice | Misura | Busta (nr) | Box (nr) |
|----------|-------------|------------|----------|
| 88210038 | 1/2" x 3/8" | 10 | 20 |
| 88210012 | 1/2" x 1/2" | 10 | 20 |

| Codice | A (mm) | B (mm) | C (mm) | D (mm) | E (mm) |
|----------|---------------|---------------|--------|--------|--------|
| 88010038 | G1/2" ISO 228 | G3/8" ISO 228 | 50 | 50 | CH 27 |
| 88010012 | G1/2" ISO 228 | G1/2" ISO 228 | 50 | 52 | CH 30 |

| Codice | A (mm) | B (mm) | C (mm) | D (mm) | E (mm) |
|----------|---------------|---------------|--------|--------|--------|
| 88210038 | G1/2" ISO 228 | G3/8" ISO 228 | 39,40 | 50 | CH 27 |
| 88210012 | G1/2" ISO 228 | G1/2" ISO 228 | 39,40 | 52 | CH 30 |



VALVOLE E DETENTORI

VALVOLA A SQUADRA TERMOSTATIZZABILE PER TUBO MULTISTRATO/RAME ART. 880 T



| Codice | Misura | Busta (nr) | Box (nr) |
|-----------|-------------|------------|----------|
| 8801T0038 | 1/2" x 3/8" | 10 | 20 |
| 8801T0012 | 1/2" x 1/2" | 10 | 20 |

| Codice | A (mm) | B (mm) | C (mm) | D (mm) | E (mm) |
|-----------|---------------|---------------|--------|--------|--------|
| 8801T0038 | G1/2" ISO 228 | G3/8" ISO 228 | 61,40 | 50 | CH 27 |
| 8801T0012 | G1/2" ISO 228 | G1/2" ISO 228 | 61,40 | 52 | CH 30 |

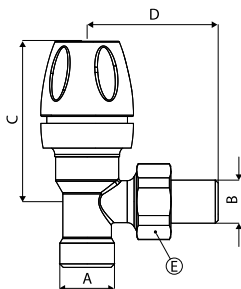
TESTA TERMOSTATICA PER VALVOLE RADIATORE CON FILETTO M30X1,5 ART. TESVAL



| Codice | Misura | Busta (nr) | Box (nr) |
|------------|---------|------------|----------|
| 3TH.TESVAL | M30X1,5 | 1 | 25 |

CARATTERISTICHE TECNICHE

| | |
|----------------------|--|
| Manopola | ABS bianco |
| Temperatura pos. 0 | 0°C |
| Temperatura pos. * | +6°C |
| Temperatura pos. 1 | +14°C |
| Temperatura pos. 2 | +17°C |
| Temperatura pos. 3 | +20°C |
| Temperatura pos. 4 | +23°C |
| Temperatura pos. 5 | +26°C |
| Temperatura pos. max | Posizione per montaggio testa su corpo valvola |
| Anello di chiusura | Metallo |
| Omologata | EN 215 |
| Dimensioni | ø 42 x 85 |

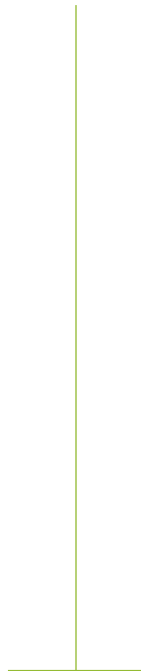


VALVOLE E DETENTORI

Abbinamento valvole e detentori - adattatori

Adattatore da 1/2" per tubo multistrato

| | Codice adattatore multistrato | Diametro tubo EXT. (mm) |
|---|-------------------------------|-------------------------|
|  | 3781L01620 | Ø16 (2.0) |
|  | 3AP1851216 | Ø16 (2.0) |
| | 3AP1851218 | Ø18 (2.0) |
| | 3AP1851220 | Ø20 (2.0) |





APE RACCORDERIE S.R.L.

SEDE

Via Guido Gozzano 8, - 25068 - Ponte Zanano - Sarezzo (BS) - Tel: +39 0308920912
ape-raccorderie.com - info@ape-raccorderie.com

LOGISTICA

Via Salvella, 20/22 - 25038 - Rovato (BS)

APE_FITTINGS_RI-RT-VALV-DET_IT_0425

